

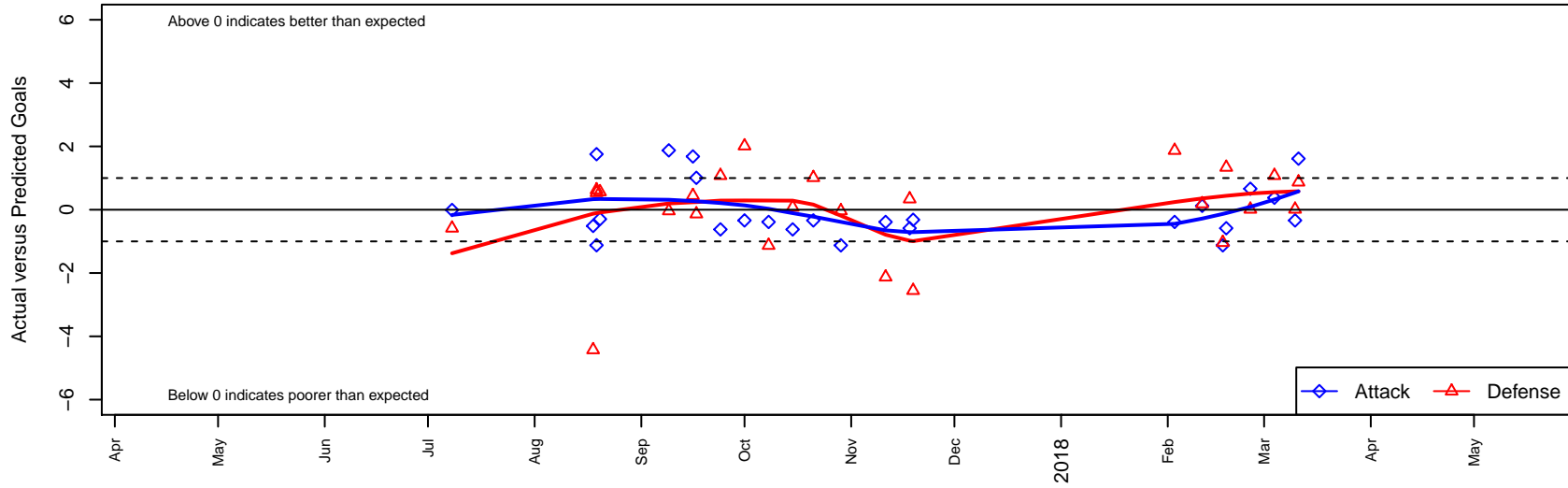
PCU Red 1 G04

Portland City United SC
 Portland, OR
 G04 total strength=1463
 attack=8.09 defense=12.24
 fall league = PTT G04 Premier Red
 spr league = Spr OYS G04 Premier Red

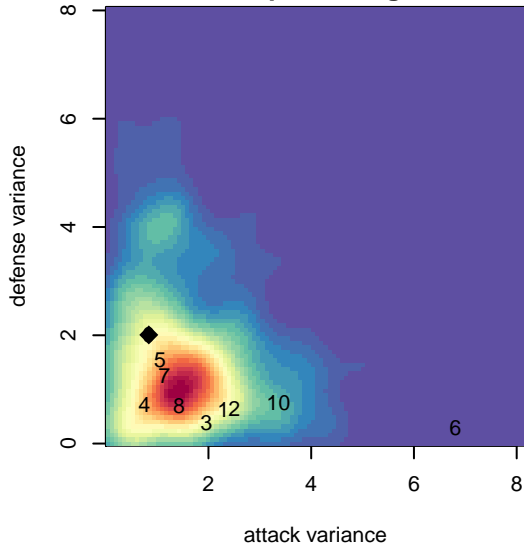
alt names used:
 PCU 04G
 PCU 04G RED
 PCU 04G Red 1
 PCU 04G Red 1

Venues played:
 2017 PCU Summer Classic U13-U14 Gold
 2017 NW Champions Cup GIRLS 04
 2017 PTT G04 Premier Red
 2017 Spr OYS G04 Premier Red

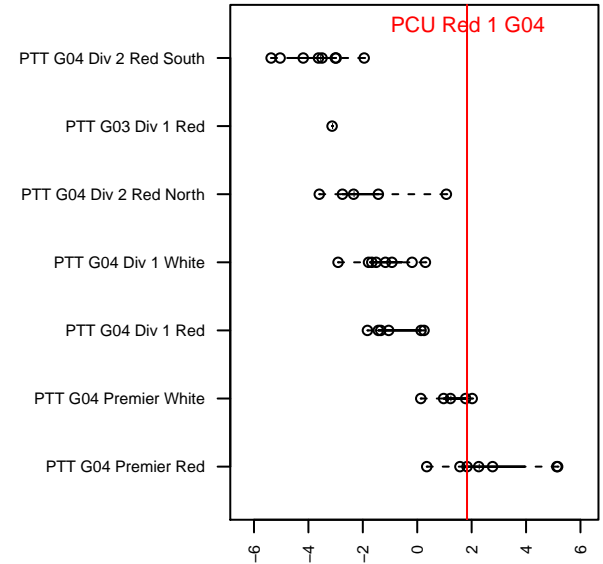
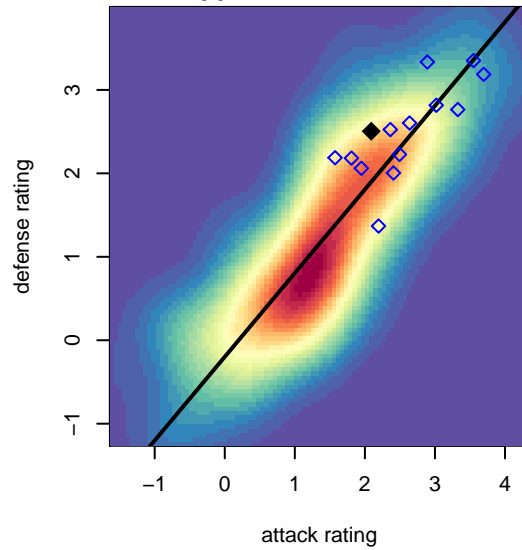
PCU Red 1 G04
 Dots are actual minus expected GF (blue circles) and GA (red triangles).
 Blue line is smoothed change in attack strength. Red is smoothed change in defense strength.



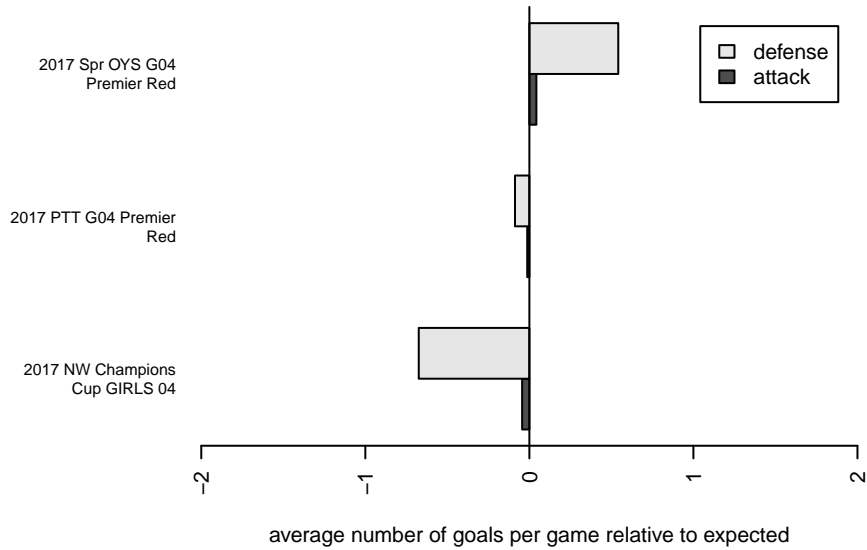
**attack and defense variance (black dot)
relative to other teams
and top 10 in region**



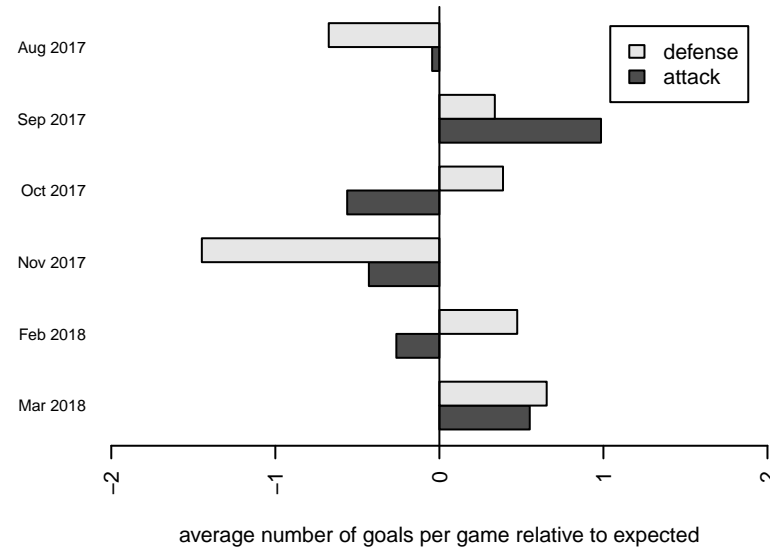
**attack and defense rating
relative to others at age
and all opponents in last 13 months**



Performance relative to 13 month average



Performance relative to 13 month average



| date | home | | away | | venue | pred.home | pred.away |
|-------------|------------------------------|---|------------------------------|---|--------------------------------------|------------------|------------------|
| 2018-03-11 | Washington Timbers Red 1 G04 | 1 | PCU Red 1 G04 | 2 | 2017 Spr OYS G04 Premier Red | 1.87 | 0.39 |
| 2018-03-10 | PCU Red 1 G04 | 0 | Eastside Timbers Red G04 | 3 | 2017 Spr OYS G04 Premier Red | 0.34 | 3.01 |
| 2018-03-04 | Westside Timbers Copa TS G04 | 0 | PCU Red 1 G04 | 1 | 2017 Spr OYS G04 Premier Red | 1.08 | 0.62 |
| 2018-02-25 | Eastside Timbers Red G04 | 3 | PCU Red 1 G04 | 1 | 2017 Spr OYS G04 Premier Red | 3.01 | 0.34 |
| 2018-02-18 | ETFC Akers Black G04 | 0 | PCU Red 1 G04 | 0 | 2017 Spr OYS G04 Premier Red | 1.34 | 0.58 |
| 2018-02-17 | PCU Red 1 G04 | 0 | THUSC Selenium Black G04 | 2 | 2017 Spr OYS G04 Premier Red | 1.13 | 0.96 |
| 2018-02-11 | PCU Red 1 G04 | 1 | Crossfire OR Blue I G04 | 1 | 2017 Spr OYS G04 Premier Red | 0.88 | 1.19 |
| 2018-02-03 | PCU Red 1 G04 | 0 | Washington Timbers Red 1 G04 | 0 | 2017 Spr OYS G04 Premier Red | 0.39 | 1.87 |
| 2017-11-19 | PCU Red 1 G04 | 0 | Crossfire OR United ECNL G04 | 6 | 2017 PTT G04 Premier Red | 0.32 | 3.45 |
| 2017-11-18 | ETFC Akers Black G04 | 1 | PCU Red 1 G04 | 0 | 2017 PTT G04 Premier Red | 1.34 | 0.58 |
| 2017-11-11 | Washington Timbers Red 1 G04 | 4 | PCU Red 1 G04 | 0 | 2017 PTT G04 Premier Red | 1.87 | 0.39 |
| 2017-10-29 | PCU Red 1 G04 | 0 | THUSC Selenium Black G04 | 1 | 2017 PTT G04 Premier Red | 1.13 | 0.96 |
| 2017-10-21 | PCU Red 1 G04 | 0 | Eastside Timbers Red G04 | 2 | 2017 PTT G04 Premier Red | 0.34 | 3.01 |
| 2017-10-15 | Westside Timbers Copa TS G04 | 1 | PCU Red 1 G04 | 0 | 2017 PTT G04 Premier Red | 1.08 | 0.62 |
| 2017-10-08 | PCU Red 1 G04 | 0 | Washington Timbers Red 1 G04 | 3 | 2017 PTT G04 Premier Red | 0.39 | 1.87 |
| 2017-10-01 | Eastside Timbers Red G04 | 1 | PCU Red 1 G04 | 0 | 2017 PTT G04 Premier Red | 3.01 | 0.34 |
| 2017-09-24 | PCU Red 1 G04 | 0 | Westside Timbers Copa TS G04 | 0 | 2017 PTT G04 Premier Red | 0.62 | 1.08 |
| 2017-09-17 | PCU Red 1 G04 | 3 | Capital FC Timbers Red G04 | 1 | 2017 PTT G04 Premier Red | 1.99 | 0.86 |
| 2017-09-16 | Crossfire OR United ECNL G04 | 3 | PCU Red 1 G04 | 2 | 2017 PTT G04 Premier Red | 3.45 | 0.32 |
| 2017-09-09 | THUSC Selenium Black G04 | 1 | PCU Red 1 G04 | 3 | 2017 PTT G04 Premier Red | 0.96 | 1.13 |
| 2017-08-20 | WA Rush G04 | 1 | PCU Red 1 G04 | 0 | 2017 NW Champions Cup GIRLS 04 | 1.56 | 0.30 |
| 2017-08-19 | PCU Red 1 G04 | 3 | WPFC Black G04 | 0 | 2017 NW Champions Cup GIRLS 04 | 1.25 | 0.54 |
| 2017-08-19 | PCU Red 1 G04 | 0 | ISC Gunners A G04 | 0 | 2017 NW Champions Cup GIRLS 04 | 1.12 | 0.63 |
| 2017-08-18 | Idaho Rush Premier G04 | 7 | PCU Red 1 G04 | 0 | 2017 NW Champions Cup GIRLS 04 | 2.57 | 0.51 |
| 2017-07-08 | PCU Red 1 G04 | 1 | FC Edmonds Quiet Riot G05 | 1 | 2017 PCU Summer Classic U13-U14 Gold | 1.01 | 0.42 |